

Flatbed Scanner Unit 201

Optional A3 Flatbed
Scanner Unit 201

you can

High speed optional A3 Flatbed scanner.
Perfect for scanning bound and fragile media.



High performance boosts productivity.

Canon's A3 flatbed scanner offers high speed scanning at up to 3.5 seconds. Connect the device to a compatible imageFORMULA scanner and you can enjoy high speed batch scanning alongside fast A3 flatbed scanning – saving time and improving productivity.

Versatile media handling.

Scan a wide range of media including books, ledgers and fragile documents – perfect for Government offices, libraries, the construction industry and general office departments.

Extend the power of your imageFORMULA scanner.

Optimise both ADF and flatbed capture in a seamless scanning operation. Scan in multiple formats into a single document file and send directly to various output destinations including email, folders and popular data management applications with ease.

Outstanding features and benefits include:

- High performance A3 flatbed scanner
- Rapid scanning speeds
- Simple USB connection with imageFORMULA scanners
- Seamless dual scanning, single file operation
- Includes unique ambient light cancelling mode
- Access to the imageFORMULA scanner's powerful image processing features
- Perfect for capturing bound and fragile documents
- Compact and robust design ideal for demanding environments



imageFORMULA

Canon

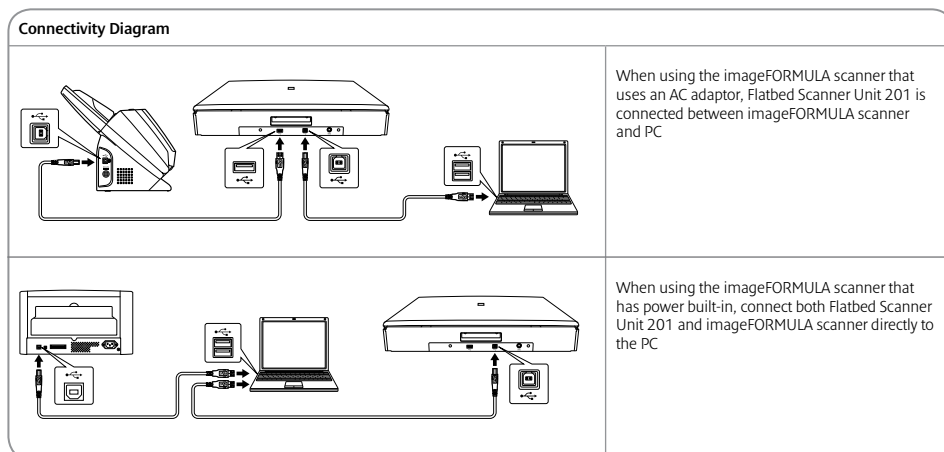
Specifications: Flatbed Scanner Unit 201

Type Document Reading Sensor Optical Resolution Light Source Reading Side Interface Dimensions Weight Power Requirements Power Consumption Operating Environment Environmental Compliance	Universal A3 Flatbed Scanner Option CCD Sensor 600dpi LED (RGB) Front High speed USB 2.0 Tray Closed: 571 (W) x 436 (D) x 96 (H) mm Approx. 8.5Kg (Without AC Adaptor) AC100 - 240V (50/60Hz) Scanning 21W or less, Sleep Mode 3.1W or less, Power Turned Off, less than 0.3W 10 - 32.5°C (50 - 90.5°F), Humidity: 20 - 80% RH RoHS and ENERGY STAR	READING SPEED (A4, Portrait)	Flatbed Scanner Unit 201		
		B & W / Greyscale Colour	200 / 300dpi	A4	A3
			200 / 300dpi	3.0 seconds 3.5 seconds	3.5 seconds 4.5 seconds
		DOCUMENT SPECIFICATIONS Width Length	297.4mm 431.8mm		
OUTPUT Mode Resolution	Black and White, Error Diffusion, Advanced Text Enhancement II, 8-bit Greyscale (256-level), 24-bit Colour, Auto Colour Detection 100 x 100dpi, 150 x 150dpi, 200 x 200dpi, 240 x 240dpi, 300 x 300dpi, 400 x 400dpi, 600 x 600dpi				
PRODUCT FEATURES	Automatic Page Size Detection, Deskew, Ambient Light Cancelling Mode, Scan Area Setting, Scanning side, Contrast Arrangement Automatic Resolution Setting. Features inherited from imageFORMULA scanners: Auto Colour Detection, Text Orientation Recognition, Moire Reduction, Edge Enhancement, Prevent Bleed Through / Remove Background, Preset Gamma Curve, Colour Dropout / Colour Enhancement, MultiStream, Barcode Recognition.				

Some images are simulated for clarity of reproduction. All data is based on Canon's standard testing methods. This leaflet and the specification of the product have been developed prior to the date of the product launch. Final specifications are subject to change without notice. ™ and ©; all company and / or product names are trademarks and / or registered trademarks of their respective manufacturers in their markets and / or countries.

Compatible imageFORMULA Scanners

	DR-M160	DR-6030C	DR-6050C DR-7550C DR-9050C	DR-X10C
Document Size	A4	A3	A3	A3
Feeder Type	ADF	ADF	ADF	ADF
Reading Speed (A4, 200dpi, Portrait) B & W / Greyscale	60ppm / 120ipm	60ppm / 120ipm	60ppm / 120ipm 75ppm / 150ipm 90ppm / 180ipm	100ppm / 200ipm
	Colour	60ppm / 120ipm	60ppm / 120ipm 75ppm / 150ipm 90ppm / 180ipm	100ppm / 200ipm
Feeder Capacity (80g/m ²)	60 sheets	100 sheets	300 sheets 500 sheets 500 sheets	500 sheets
Suggested Daily Duty Cycle (Scans/day)	7,000	10,000	20,000 22,500 27,000	60,000
Bundled Software	CaptureOnTouch CapturePerfect eCopy PDF Pro Office Kofax VRS	CapturePerfect Kofax VRS	CapturePerfect Kofax VRS	CapturePerfect



Canon (UK) Ltd
 Woodhatch, Reigate
 Surrey, RH2 8BF
 Tel: 01737 220000
 Fax: 01737 220022
canon.co.uk/scanners

Canon Electronics Inc
canon.com

Canon Europe
canon-europe.com

English Edition 0170W162
 © Canon Europa N.V.
 2012

